

STORMWATER POLLUTION PREVENTION

a guide for managing job site runoff.

The drawing below illustrates the most common areas needing protection from job site runoff caused by stormwater events. This information is intended as a guide only. Please refer to your SVPPP documentation for details on the requirements for your site. We welcome you to call 772.646.0597 and speak with a BMP specialist at GEI Works for consultation on products that will assist you in meeting compliance as well as protecting stormwater systems from site discharge.

1. Protect areas reserved for vegetation and/or trees. If you have plans for rain gardens or bioswales, make sure to protect these areas to avoid compacting. Save time and money by preserving existing mature trees during construction. Preserving mature trees minimizes the amount of soil that needs to be stabilized once construction is complete, and minimizes the amount of runoff during and after construction activity. Follow the links below for suggested BMPs; [Coir Logs](#) [Silt Fence](#)

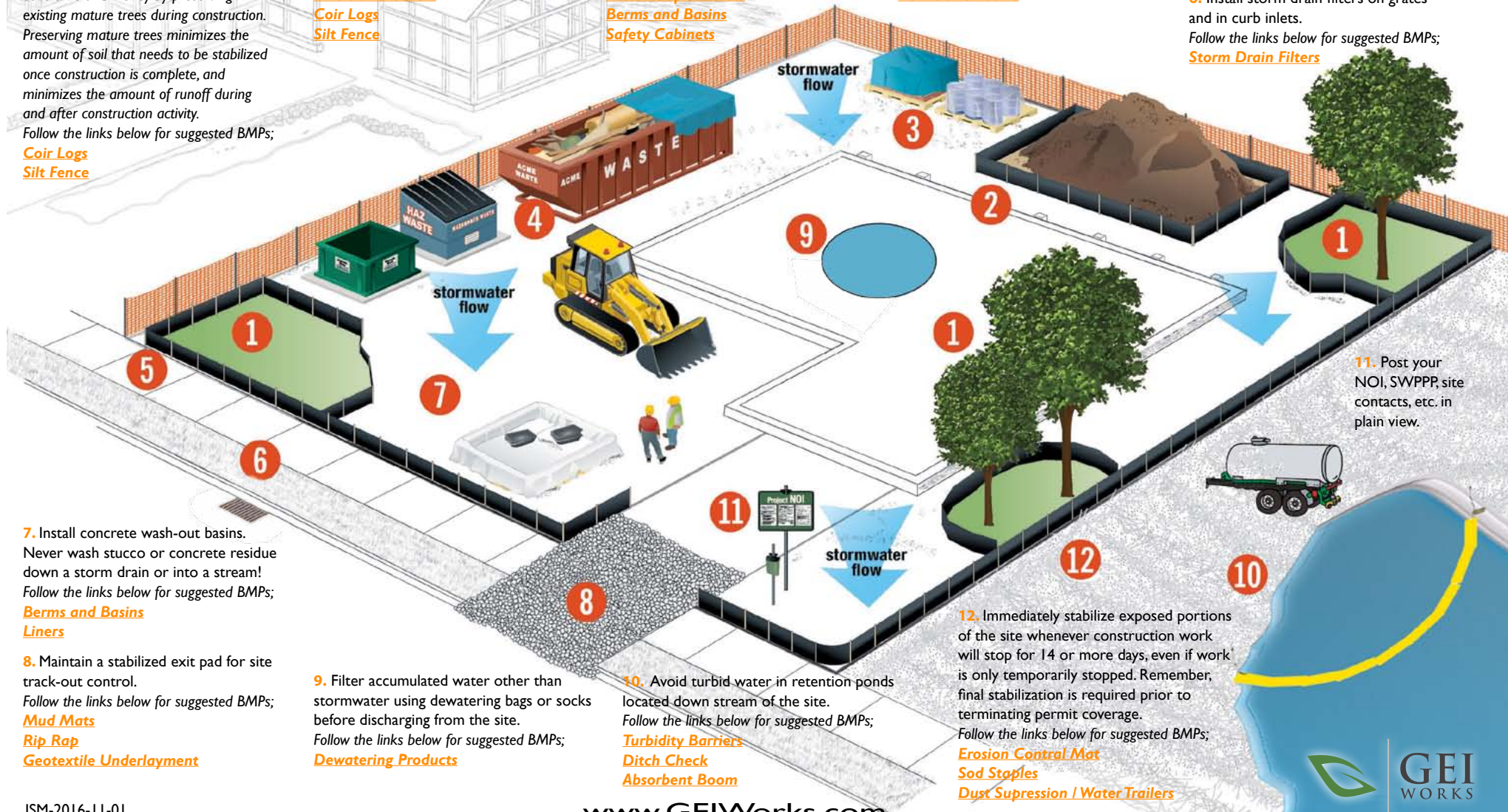
2. Stockpile your soil. Preserve native topsoil on site unless infeasible and protect all soil storage piles from run-on and runoff. Follow the links below for suggested BMPs; [Liners and Covers](#) [Drum & Spill Pallets](#) [Berms and Basins](#) [Safety Cabinets](#)

3. Protect construction materials and fuel storage tanks from run-on and runoff by covering daily. Follow the links below for suggested BMPs; [Liners and Covers](#) [Drum & Spill Pallets](#) [Berms and Basins](#) [Safety Cabinets](#)

4. Identify Waste Disposal Areas. Designate using signage, and protect from run-on and runoff. Follow the links below for suggested BMPs; [Liners and Covers](#) [Berms and Basins](#)

5. Install perimeter controls around the boundaries of your site. Follow the links below for suggested BMPs; [Coir Logs](#) [Silt and Safety Fence](#)

6. Install storm drain filters on grates and in curb inlets. Follow the links below for suggested BMPs; [Storm Drain Filters](#)



7. Install concrete wash-out basins. Never wash stucco or concrete residue down a storm drain or into a stream! Follow the links below for suggested BMPs; [Berms and Basins](#) [Liners](#)

8. Maintain a stabilized exit pad for site track-out control. Follow the links below for suggested BMPs; [Mud Mats](#) [Rip Rap](#) [Geotextile Underlayment](#)

9. Filter accumulated water other than stormwater using dewatering bags or socks before discharging from the site. Follow the links below for suggested BMPs; [Dewatering Products](#)

10. Avoid turbid water in retention ponds located down stream of the site. Follow the links below for suggested BMPs; [Turbidity Barriers](#) [Ditch Check](#) [Absorbent Boom](#)

12. Immediately stabilize exposed portions of the site whenever construction work will stop for 14 or more days, even if work is only temporarily stopped. Remember, final stabilization is required prior to terminating permit coverage. Follow the links below for suggested BMPs; [Erosion Control Mat](#) [Sod Staples](#) [Dust Suppression / Water Trailers](#)

11. Post your NOI, SVPPP, site contacts, etc. in plain view.