



# Flexible Water Storage Tanks

## Collapsible Pillow Tanks and Bladders

MARS 

[MARS Flexible Water Tanks](#) come in a variety of sizes and fabric options to serve a variety of purposes, from rainwater harvesting to potable water storage. Made of a flexible fabric material, these tanks are known for their easy deployment and storage capability.

They provide economical, dependable water storage solutions making these tanks ideal for residential, industrial facility, construction site, or storage locations.



GEI  
WORKS

# Flexible Water Storage Tanks

## Collapsible Pillow Tanks and Bladders

### Overview

[MARS Flexible Drinking Water Tanks](#) are constructed with FDA and NSF-compliant fabrics and industry-leading state-of-the-art radio frequency heat welding and vulcanizing techniques. Each MARS Water Storage Tank undergoes a rigorous four-point inspection before shipping. Part of the inspection includes fully inflating the tank with air and testing the pillow tank for leaks.

MARS Water Pillow Tanks come standard with (2) 2” bulkhead fittings for fill and discharge. There are also 3” and 4” bulkhead options. Additional sizes and fitting types are available by request.

### Features

- Bulk Storage Options (25 gallons up to 210,000 gallons)
- Easy Installation (unfold and fill)
- When Unfilled, Folds up for Storage or Transportation
- Ideal for Temporary Storage Requirements
- Low Profile Design
- Resistant to Extreme Temperature and UV exposure

Please discuss required fill and discharge options, support, fasteners, ground anchors, berm/ground liners, shade shelters, etc with a tank product specialist to ensure smooth in-field operations.

In addition to our drinking water storage options, we also have collapsible tanks for the storage of grey water or fuel.



# Flexible Water Storage Tanks

## Collapsible Pillow Tanks and Bladders

Capacity US	Capacity Metric	Sizing US LxWxH	Sizing Metric LxWxH
25 gal	94 L	36" x 24" x 8"	0.90 m x 0.60 m x 0.20 m
50 gal	189 L	52" x 36" x 9"	1.3 m x 0.90 m x 0.23 m
75 gal	283 L	54" x 42" x 9"	1.37 m x 1.06 m x 0.23 m
100 gal	378 L	66" x 42" x 9"	1.68 m x 1.06 m x 0.23 m
150 gal	567 L	60" x 60" x 12"	1.50 m x 1.50 m x 0.30 m
200 gal	757 L	70" x 70" x 12"	2.10 m x 1.50 m x 0.36 m
250 gal	946 L	84" x 60" x 14"	2.10 m x 1.50 m x 0.36 m
275 gal	1,040 L	80" x 72" x 16"	1.80 m x 2.00 m x 0.40 m
300 gal	1,135 L	84" x 66" x 14"	2.10 m x 1.68 m x 0.36 m
500 gal	1,892 L	108" x 84" x 16"	2.75 m x 2.10 m x 0.40 m
600 gal	2,271 L	120" x 84" x 16"	3.00 m x 2.10 m x 0.40 m
700 gal	2,649 L	114" x 99" x 16"	2.90 m x 2.50 m x 0.40 m
800 gal	3,028 L	120" x 72" x 24"	1.80 m x 3.00 m x 0.60 m
900 gal	3,406 L	132" x 72" x 24"	1.80 m x 3.35 m x 0.60 m
1,000 gal	3,785 L	132" x 108" x 16"	3.35 m x 2.74 m x 0.40 m
1,500 gal	5,678 L	168" x 120" x 18"	4.27 m x 3.00 m x 0.46 m
2,000 gal	7,570 L	174" x 126" x 22"	4.40 m x 3.20 m x 0.56 m
2,500 gal	9,463 L	174" x 144" x 24"	4.40 m x 3.65 m x 0.60 m
3,000 gal	11,356 L	180" x 138" x 24"	4.57 m x 4.10 m x 0.60 m
4,000 gal	15,141 L	216" x 168" x 27"	5.50 m x 4.27 m x 0.70 m
5,000 gal	18,927 L	234" x 186" x 27"	5.94 m x 4.72 m x 0.70 m

Capacity US	Capacity Metric	Sizing US LxWxH	Sizing Metric LxWxH
5,500	20,820	20' x 17' x 2.25'	6.10 m x 5.20 m x 0.70 m
6,000	22,712	21' x 18' x 2.25'	6.40 m x 5.50 m x 0.70 m
6,500	24,605	20.8' x 18' x 2.5'	6.34 m x 5.50 m x 0.76 m
7,000	26,498	19' x 20' x 2.5'	5.80 m x 6.10 m x 0.76 m
7,500	28,391	20' x 20' x 2.5'	6.10 m x 6.10 m x 0.76 m
8,000	30,283	19' x 19' x 3'	5.80 m x 5.80 m x 0.90 m
9,000	34,069	20' x 21' x 3'	6.10 m x 6.40 m x 0.90 m
9,500	35,961	21' x 21' x 3'	6.40 m x 6.40 m x 0.90 m
10,000	37,854	21' x 23' x 3'	6.40 m x 7.00 m x 0.90 m
20,000	75,708	33' x 25' x 3.5'	10.10 m x 7.60 m x 1.07 m
30,000	113,562	36' x 32' x 3.5'	11.00 m x 9.75 m x 1.07 m
40,000	151,416	37' x 40' x 4'	11.30 m x 12.20 m x 1.20 m
50,000	189,271	42' x 43' x 4'	12.80 m x 13.10 m x 1.20 m
70,000	264,979	48' x 42' x 4'	14.60 m x 12.80 m x 1.20 m
80,000	302,833	77' x 30' x 5.5'	23.47 m x 9.10 m x 1.70 m
106,000	401,254	88' x 35' x 5.5'	26.80 m x 10.70 m x 1.70 m
125,000	473,176	58' x 59' x 5'	17.70 m x 18.00 m x 1.50 m
150,000	567,812	78' x 58' x 6'	23.77 m x 17.70 m x 1.80 m
210,000	794,936	75' x 73' x 6'	22.80 m x 22.25 m x 1.80 m

Please Note: Sizes are subject to change without notice. Contact a specialist for details.

### Accessories

Ground Cloth | Covers | Underlayment | Additional Fittings | Repair Kits

For more complete information on GEIWorks products and solutions, visit us on the Web at [www.geiworks.com](http://www.geiworks.com).

Phone: (+1) 772-646-0597 | [info@geiworks.com](mailto:info@geiworks.com)

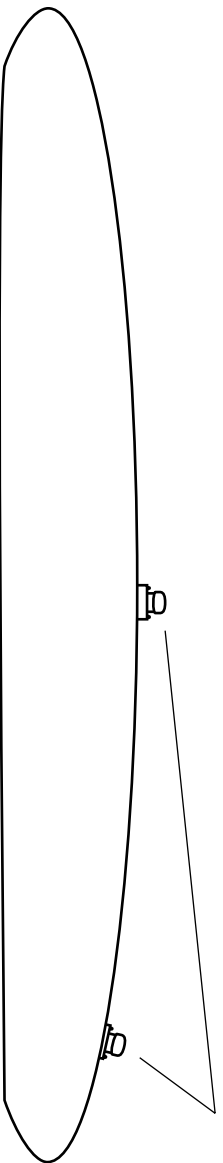
© 2018 GEI Works  
All rights reserved  
GEI Works terms and conditions apply.

All photos are representative only. Actual products may differ.

Materials and specifications are subject to change without notice. Featured products in photos may include additional equipment or accessories.

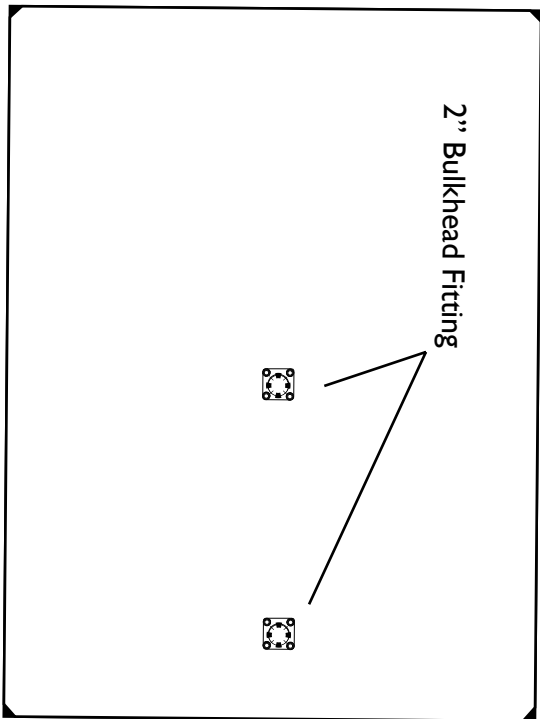
GEI Works, Mars, Taurus, Triton, Kraken, Orion, Helios, Centaur, Hydrostar and [geiworks.com](http://geiworks.com), their respective logos, product identity used herein, are trademarks of GEI Works and may not be used without permission.



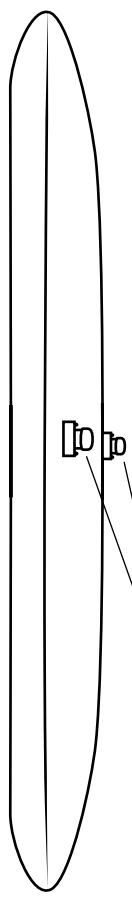


Side View\*

2" Bulkhead Fitting



Top View\*




End View\*

2" Bulkhead Fitting

\*Drawings depict filled product.

Reference chart on previous page for dimensions.

Drawing for illustrative purposes only. Not to scale.

	<b>GEI</b> WORKS		Toll Free: 1.888.703.9889 Phone: (1+) 772.646.0597 info@GEIWorks.com   www.GEIWorks.com	
	<b>Mars Flexible Storage Tank</b>			

Scale:	Drawing:	Revision:	Date:	By:
--------	----------	-----------	-------	-----