



Flexible Gray Water Storage Tanks

Collapsible Pillow Tanks and Bladders

MARS 

The [Mars Gray Water Tank](#) is a versatile and efficient solution for a range of non-potable liquid applications including gray water, waste water, production fluids, frac liquids, process liquids, and agricultural spray materials. Combining high-strength chemical and UV resistance with flexible durability, the Mars Gray Water Tank is constructed from a range of fabrics that perform in challenging conditions.



Flexible Gray Water Storage Tanks

Collapsible Pillow Tanks and Bladders

[Mars Flexible Gray Water Tanks](#) provide economical, dependable water storage solutions from quick deployment in military operations to rainwater harvesting. Multiple sizes and fabric options are available making these tanks ideal for industrial facility, construction site, or storage locations.

All MARS gray water tanks are constructed with water-grade fabrics using industry leading state of the art radio frequency heat welding and vulcanizing techniques. Each MARS gray water storage tank undergoes a rigorous 4 point inspection before shipping.

Advantages:

- Bulk Storage Options (25 gallons up to 210,000 gallons)
- Easy Installation (unfold and fill)
- Folds up for Storage or Transportation
- Ideal for Temporary Storage Requirements
- Low Profile
- Extreme Temperature and UV exposure
- Stays Strong During Extended Exposure to Gray Water

Common Uses:

- Waste Water Storage in Remote Locations or Campsites
- Military Bases
- Construction Job Sites
- During Catering Events
- Storage for Laundromats and Latrines
- Frac Water Storage
- Mining and Oil Field Locations

Each MARS gray water tank comes with (2) 2" Bulkhead fittings for fill and discharge. Additional sizes and fitting types are available by request. Please discuss required fill and discharge options, support, fasteners, ground anchors, berm/ground liners, shade shelters, etc with a product specialist to ensure smooth in-field operations.



Flexible Gray Water Storage Tanks Specifications

Capacity US	Capacity Metric	Sizing US LxWxH	Sizing Metric LxWxH
25 gal	94 L	36" x 24" x 8"	0.90 m x 0.60 m x 0.20 m
50 gal	189 L	52" x 36" x 9"	1.3 m x 0.90 m x 0.23 m
75 gal	283 L	54" x 42" x 9"	1.37 m x 1.06 m x 0.23 m
100 gal	378 L	66" x 42" x 9"	1.68 m x 1.06 m x 0.23 m
150 gal	567 L	60" x 60" x 12"	1.50 m x 1.50 m x 0.30 m
200 gal	757 L	70" x 70" x 12"	2.10 m x 1.50 m x 0.36 m
250 gal	946 L	84" x 60" x 14"	2.10 m x 1.50 m x 0.36 m
275 gal	1,040 L	80" x 72" x 16"	1.80 m x 2.00 m x 0.40 m
300 gal	1,135 L	84" x 66" x 14"	2.10 m x 1.68 m x 0.36 m
500 gal	1,892 L	108" x 84" x 16"	2.75 m x 2.10 m x 0.40 m
600 gal	2,271 L	120" x 84" x 16"	3.00 m x 2.10 m x 0.40 m
700 gal	2,649 L	114" x 99" x 16"	2.90 m x 2.50 m x 0.40 m
800 gal	3,028 L	120" x 72" x 24"	1.80 m x 3.00 m x 0.60 m
900 gal	3,406 L	132" x 72" x 24"	1.80 m x 3.35 m x 0.60 m
1,000 gal	3,785 L	132" x 108" x 16"	3.35 m x 2.74 m x 0.40 m
1,500 gal	5,678 L	168" x 120" x 18"	4.27 m x 3.00 m x 0.46 m
2,000 gal	7,570 L	174" x 126" x 22"	4.40 m x 3.20 m x 0.56 m
2,500 gal	9,463 L	174" x 144" x 24"	4.40 m x 3.65 m x 0.60 m
3,000 gal	11,356 L	180" x 138" x 24"	4.57 m x 4.10 m x 0.60 m
4,000 gal	15,141 L	216" x 168" x 27"	5.50 m x 4.27 m x 0.70 m
5,000 gal	18,927 L	234" x 186" x 27"	5.94 m x 4.72 m x 0.70 m

Capacity US	Capacity Metric	Sizing US LxWxH	Sizing Metric LxWxH
5,500	20,820	20' x 17' x 2.25'	6.10 m x 5.20 m x 0.70 m
6,000	22,712	21' x 18' x 2.25'	6.40 m x 5.50 m x 0.70 m
6,500	24,605	20.8' x 18' x 2.5'	6.34 m x 5.50 m x 0.76 m
7,000	26,498	19' x 20' x 2.5'	5.80 m x 6.10 m x 0.76 m
7,500	28,391	20' x 20' x 2.5'	6.10 m x 6.10 m x 0.76 m
8,000	30,283	19' x 19' x 3'	5.80 m x 5.80 m x 0.90 m
9,000	34,069	20' x 21' x 3'	6.10 m x 6.40 m x 0.90 m
9,500	35,961	21' x 21' x 3'	6.40 m x 6.40 m x 0.90 m
10,000	37,854	21' x 23' x 3'	6.40 m x 7.00 m x 0.90 m
20,000	75,708	33' x 25' x 3.5'	10.10 m x 7.60 m x 1.07 m
30,000	113,562	36' x 32' x 3.5'	11.00 m x 9.75 m x 1.07 m
40,000	151,416	37' x 40' x 4'	11.30 m x 12.20 m x 1.20 m
50,000	189,271	42' x 43' x 4'	12.80 m x 13.10 m x 1.20 m
70,000	264,979	48' x 42' x 4'	14.60 m x 12.80 m x 1.20 m
80,000	302,833	77' x 30' x 5.5'	23.47 m x 9.10 m x 1.70 m
106,000	401,254	88' x 35' x 5.5'	26.80 m x 10.70 m x 1.70 m
125,000	473,176	58' x 59' x 5'	17.70 m x 18.00 m x 1.50 m
150,000	567,812	78' x 58' x 6'	23.77 m x 17.70 m x 1.80 m
210,000	794,936	75' x 73' x 6'	22.80 m x 22.25 m x 1.80 m

Please Note: Sizes are subject to change without notice. Contact a specialist for details.

Accessories

Ground Cloth | Covers | Underlayment | Additional Fittings | Repair Kits

For more complete information on GEI Works products and solutions, visit us on the Web at www.geiworks.com.

Phone: (+1) 772-646-0597 | info@geiworks.com

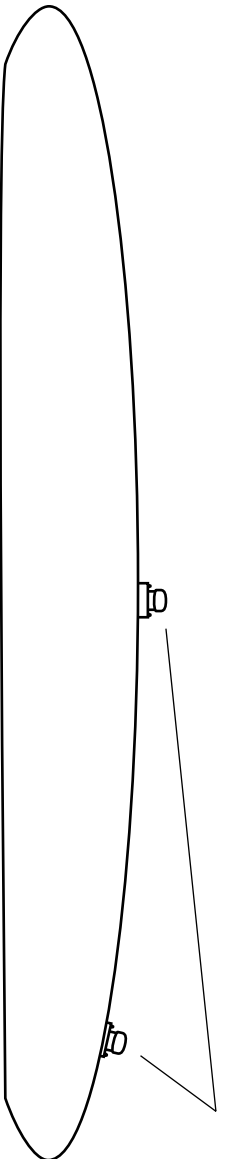
© 2018 GEI Works
All rights reserved
GEI Works terms and conditions apply.

All photos are representative only. Actual products may differ.

Materials and specifications are subject to change without notice. Featured products in photos may include additional equipment or accessories.

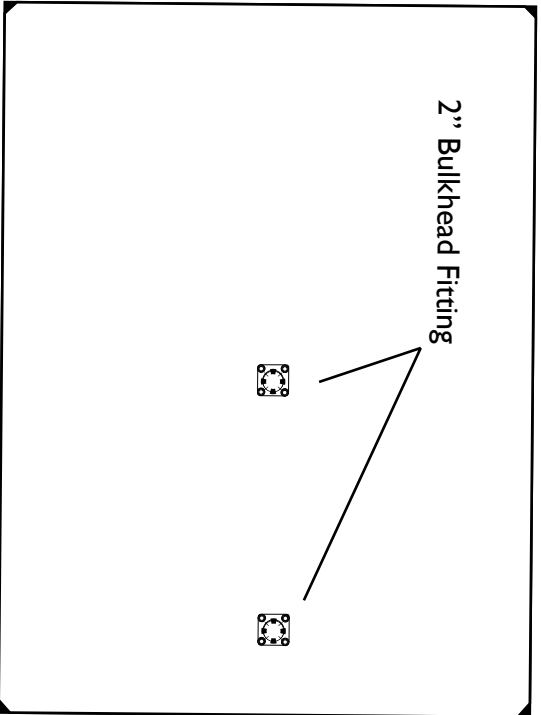
GEI Works, Mars, Taurus, Triton, Kraken, Orion, Helios, Centaur, Hydrostar and geiworks.com, their respective logos, product identity used herein, are trademarks of GEI Works and may not be used without permission.



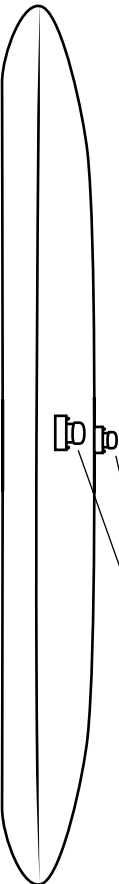


Side View*

2" Bulkhead Fitting



Top View*



End View*

2" Bulkhead Fitting

*Drawings depict filled product.

Reference chart on previous page for dimensions.

Drawing for illustrative purposes only. Not to scale.



GEI
WORKS

Toll Free: 1.888.703.9889
Phone: (+) 772.646.0597
info@GEIWorks.com | www.GEIWorks.com

Mars Flexible Storage Tank

Scale:	Drawing:	Revision:	Date:	By:
--------	----------	-----------	-------	-----