

Oil Fence

For Wetlands And Marshes

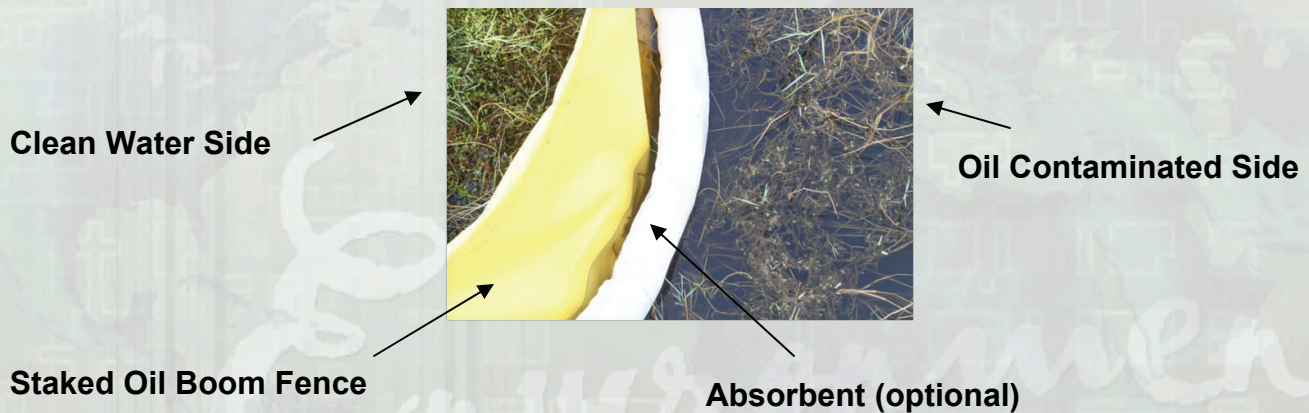
Our Granite Environmental Oil Fence is a great tool for oil spill response. This oil fence boom is made from durable PVC coated fabric with top cable acting as a tension member to secure it to the posts anchored in calm and shallow water conditions. Suited for wetlands, marshes and bayous.



Benefits:

- Simple to install:
 - Attach to stakes
- Compact and easy to transport on flat boat.
- Stands up to UV (ultraviolet) and cold temperatures.
- Materials meet ASTM standards

This staked marsh oil boom is an essential tool to any oil spill response program



Simple To Install
Compact And Easy To Transport On Flat Boat

www.Clean-Up-Oil-Spill.com



GraniteEnvironmental.com

Product Solutions For A Cleaner World

TEL: +1 (772) 646-0597 FAX: +1 (772) 589-3343

PO BOX 780928 | Sebastian, FL 32978-0928

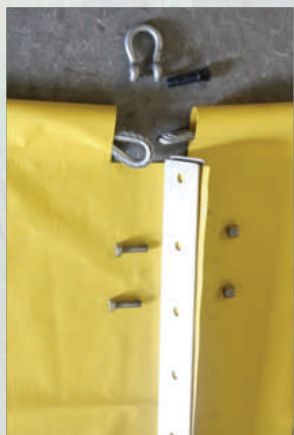
Oil Fence

For Wetlands And Marshes

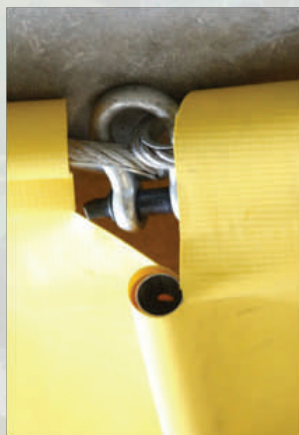
Product Specifications:

- **Length:** 100, 200, or 300 foot
- **Height:** 2' 6" (other options are available)
- **Fabric:** 22 oz standard (others are available)
- **Primary color:** yellow, orange preferred (others as available)
- **Top Tension Cable:** 1/4 galv. steel wire standard (optional 5/16")
- **Bottom Ballast Chain:** 1/4 galv. chain standard (optional 5/16")
- **Shackle:**
 - For cable to top cable connection.
 - For ballast to bottom ballast chain connection.
- **Fabric connections:** See options (pictures)

Aluminum, bolt & nut



Rolled pipe and cable tie



Simple To Install
Compact And Easy To Transport On Flat Boat

www.Clean-Up-Oil-Spill.com



GraniteEnvironmental.com

Product Solutions For A Cleaner World

TEL: +1 (772) 646-0597 FAX: +1 (772) 589-3343

PO BOX 780928 | Sebastian, FL 32978-0928

Oil Fence

For Wetlands And Marshes

Installation:

- Product supplied folded or rolled.
- Stakes or anchor points placed at typical spacing of:
 - Hard anchor points 100, 200, or 300 ft spaces
 - In Between points 20 ft spacing
- Secure cable to 1st hard anchor point.
- Unroll / unfold boom.
- Insert stakes / anchor points at desired spacing and secure to top tension cable.
- Secure end at cable to hard mounting point (and to next boom section)
- Make fabric connection and chain connections.
- Repeat process.



Simple To Install
Compact And Easy To Transport On Flat Boat

www.Clean-Up-Oil-Spill.com



GraniteEnvironmental.com

Product Solutions For A Cleaner World

TEL: +1 (772) 646-0597 FAX: +1 (772) 589-3343

PO BOX 780928 | Sebastian, FL 32978-0928