



Flexible Water Storage Tanks

Collapsible Pillow Tanks and Bladders

MARS 

[MARS flexible water tanks](#) provide economical, dependable water storage solutions from quick deployment in military operations to rainwater harvesting. Multiple sizes and fabric options are available making these tanks ideal for industrial facility, construction site or storage locations.



GEI
WORKS

Flexible Water Storage Tanks

Collapsible Pillow Tanks and Bladders

All MARS [drinking water tanks](#) are constructed with FDA and NSF compliant fabrics and industry leading state of the art radio frequency heat welding and vulcanizing techniques. Each MARS water storage tank undergoes a rigorous 4 point inspection before shipping.

Each MARS water tank comes with (2) 2" Bulkhead fittings for fill and discharge. Additional sizes and fitting types are available by request.

- Bulk Storage Options (25 gallons up to 210,000 gallons)
- Easy Installation (unfold and fill)
- Folds up for Storage or Transportation
- Ideal for Temporary Storage Requirements
- Low Profile
- Extreme Temperature and UV exposure

Please discuss required fill and discharge options, support, fasteners, ground anchors, berm/ground liners, shade shelters, etc with a sales specialist to ensure smooth in-field operations.

In addition to our water storage options, collapsible tanks are also available for the storage of fuel. Contact a specialist for details.



1. Stores flat and folds for easy transport
2. Tanks are inflated with air and tested for leaks
3. Standard 2" Bulkhead. 3" and 4" Bulkheads available on request.

Flexible Water Storage Tanks

Collapsible Pillow Tanks and Bladders

| Capacity US | Capacity Metric | Sizing US WxLxH | Sizing Metric WxLxH |
|-------------|-----------------|-------------------|-------------------------|
| 25 gal | 94 L | 24" x 36" x 8" | 0.9 m x 0.6 m x 0.2 m |
| 50 gal | 189 L | 36" x 52" x 9" | 1.3 m x 0.9 m x 0.23 m |
| 75 gal | 283 L | 42" x 54" x 9" | 1.37 m x 1 m x 0.23 m |
| 100 gal | 378 L | 48" x 66" x 9" | 1.68 m x 1.2 m x 0.23 m |
| 150 gal | 567 L | 60" x 60" x 12" | 1.5 m x 1.5 m x 0.3 m |
| 250 gal | 946 L | 84" x 60" x 14" | 2.1 m x 1.5 m x 0.36 m |
| 275 gal | 1,040 L | 72" x 80" x 16" | 1.8 m x 2 m x 0.4 m |
| 300 gal | 1,135 L | 84" x 66" x 14" | 2.1 m x 1.68 m x 0.36 m |
| 500 gal | 1,892 L | 84" x 108" x 16" | 2.7 m x 2.1 m x 0.4 m |
| 600 gal | 2,271 L | 120" x 84" x 16" | 3 m x 2.1 m x 0.4 m |
| 700 gal | 2,649 L | 114" x 99" x 16" | 2.9 m x 2.5 m x 0.4 m |
| 800 gal | 3,028 L | 72" x 120" x 24" | 1.8 m x 3 m x 0.6 m |
| 900 gal | 3,405 L | 72" x 132" x 24" | 1.8 m x 3.35 m x 0.6 m |
| 1,000 gal | 3,785 L | 108" x 132" x 16" | 3.35 m x 2.74 m x 0.4 m |
| 1,500 gal | 5,678 L | 120" x 168" x 18" | 4.27 m x 3 m x 0.46 m |
| 2,000 gal | 7,570 L | 126" x 174" x 22" | 4.4 m x 3.2 m x 0.56 m |
| 2,500 gal | 9,463 L | 144" x 174" x 24" | 4.4 m x 3 m x 0.6 m |
| 3,000 gal | 11,356 L | 162" x 180" x 24" | 4.57 m x 4.1 m x 0.6 m |
| 4,000 gal | 15,141 L | 168" x 216" x 27" | 5.5 m x 4.27 m x 0.7 m |
| 5,000 gal | 18,927 L | 186" x 234" x 27" | 5.94 m x 4.72 m x 0.7 m |

| Capacity US | Capacity Metric | Sizing US WxLxH | Sizing Metric WxLxH |
|-------------|-----------------|--------------------|--------------------------|
| 5500 gal | 20,820 L | 20' x 17' x 2.25' | 6.1 m x 5.2 m x 0.7 m |
| 6000 gal | 22,712 L | 21' x 18' x 2.25' | 6.4 m x 5.5 m x 0.7 m |
| 6500 gal | 24,605 L | 20.8' x 18' x 2.5' | 6.34 m x 5.5 m x 0.76 m |
| 7000 gal | 26,498 L | 19' x 20' x 2.5' | 5.8 m x 5.8 m x 0.76 m |
| 7500 gal | 28,391 L | 20' x 20' x 2.5' | 6.1 m x 6.1 m x 0.76 m |
| 8000 gal | 30,283 L | 19' x 19' x 3' | 5.8 m x 5.8 m x 0.9 m |
| 9000 gal | 34,069 L | 21' x 20' x 3' | 6.1 m x 6.4 m x 0.9 m |
| 9500 gal | 35,961 L | 21' x 21' x 3' | 6.4 m x 6.4 m x 0.9 m |
| 10,000 gal | 37,854 L | 23' x 21' x 3' | 6.4 m x 7 m x 0.9 m |
| 20,000 gal | 75,708 L | 25' x 33' x 3.5' | 10.1 m x 7.6 m x 1.07 m |
| 30,000 gal | 113,562 L | 32' x 36' x 3.5' | 11 m x 9.75 m x 1.07 m |
| 40,000 gal | 151,416 L | 40' x 37' x 4' | 11.3 m x 12.2 m x 1.2 m |
| 50,000 gal | 189,271 L | 42' x 43' x 4' | 12.8 m x 13.1 m x 1.2 m |
| 70,000 gal | 264,979 L | 48' x 42' x 4' | 14.6 m x 12.8 m x 1.2 m |
| 80,000 gal | 302,833 L | 77' x 30' x 5.5' | 23.47 m x 9.1 m x 1.7 m |
| 106,000 gal | 401,254 L | 88' x 35' x 5.5' | 26.8 m x 10.7 m x 1.7 m |
| 125,000 gal | 473,176 L | 58' x 59' x 5' | 17.7 m x 18 m x 1.5 m |
| 150,000 gal | 567,812 L | 78' x 58' x 6' | 23.77 m x 17.7 m x 1.8 m |
| 210,000 gal | 794,936 L | 75' x 73' x 6' | 22.8 m x 22.25 m x 1.8 m |

Please Note: Sizes are subject to change without notice. Contact a specialist for details at 1.888.703.9889

Accessories

Ground Cloth | Covers | Underlayment | Additional Fittings | Repair Kits

For more complete information on GEIWorks products and solutions, visit us on the Web at www.geiworks.com.

Phone: (1+) 772-646-0597 | info@geiworks.com

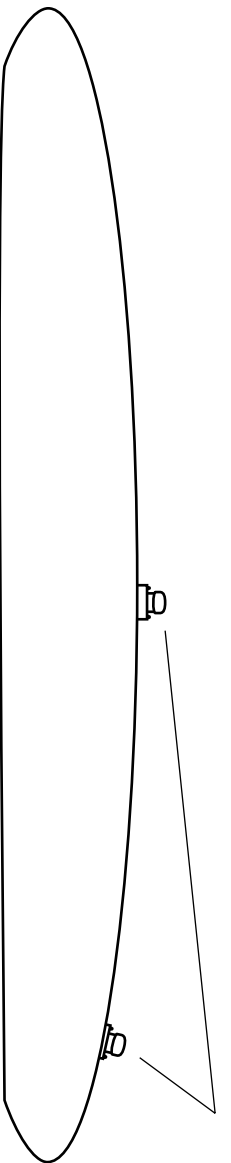
© 2015 GEI Works
All rights reserved
GEI Works terms and conditions apply.

All photos are representative only. Actual products may differ.

Materials and specifications are subject to change without notice. Featured products in photos may include additional equipment or accessories.

GEI Works, Mars, Taurus, Triton, Kraken, Orion, Helios, Centaur, Hydrostar and geiworks.com, their respective logos, product identity used herein, are trademarks of GEI Works and may not be used without permission.

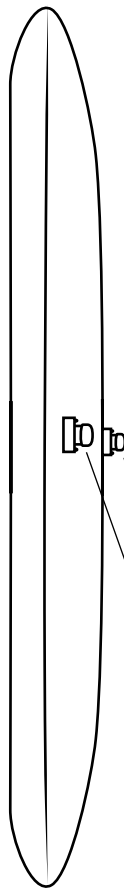




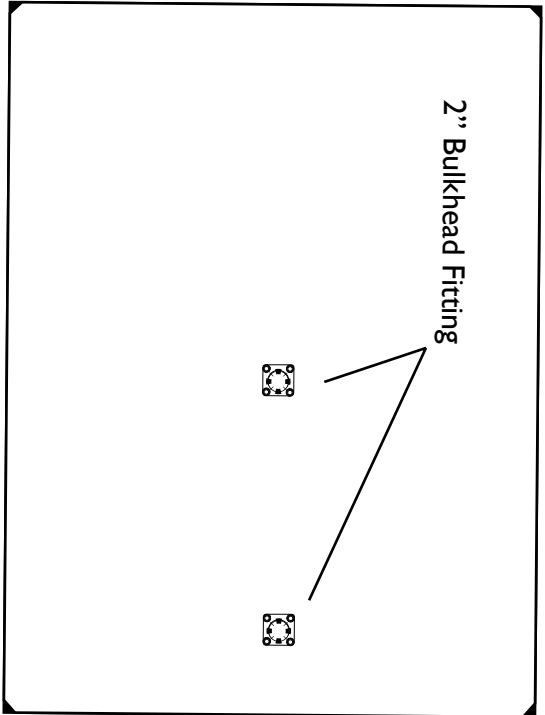
Side View*

2" Bulkhead Fitting

2" Bulkhead Fitting



End View*



Top View*

*Drawings depict filled product.

Reference chart on previous page for dimensions.

Drawing for illustrative purposes only. Not to scale.



GEI
WORKS

Toll Free: 1.888.703.9889
Phone: (1+) 772.646.0597
info@GEIWorks.com | www.GEIWorks.com

Mars Flexible Storage Tank

| | | | | |
|--------|----------|-----------|-------|-----|
| Scale: | Drawing: | Revision: | Date: | By: |
|--------|----------|-----------|-------|-----|